

E A S T

PREMIUM SERIES

REPLACEMENT WINDOWS



A WHOLE NEW POINT OF VIEW.



A WHOLE NEW POINT OF VIEW.

PREMIUM SERIES

REPLACEMENT WINDOWS

THE BEAUTY IS IN THE DETAILS.



uPVC VINYL
EXTRUSIONS



PINCH FUSION
WELDING



PATENTED
R-CORE®



SLOPED SILL
WITH SIL LOCK



INTERFORCE II™
REINFORCED



DESIGN
PRESSURE RATED



EXCEEDS .30/.30
ENERGY TAX
CREDIT
REQUIREMENTS



HP GLASS
SYSTEM



WARM EDGE
SPACER



TRIPLE GLAZED



DUAL 9 STEP
LOW-E



ARGON GAS
FILLED



ENERGY PACKAGE
UPGRADE



LIFETIME
WARRANTY

PREMIUM SERIES

REPLACEMENT WINDOWS

WHY REPLACE YOUR OLD WINDOWS?

QUALITY OF LIFE

- Ease of cleaning
- Ease of operation
- Drafts and cold
- Maintenance
- Comfort
- Noise reduction
- Security
- Home value

MAINTENANCE

- Painting
- Caulking
- Scraping
- Ease of cleaning
- Rot
- Mold
- Leaks
- Condensation
- Icing

ENERGY COSTS

- Home value
- Drafts
- Reducing heating costs
- Reducing air conditioning costs
- Reduced energy loss
- Resale value
- Comfort

PREMIUM SERIES

REPLACEMENT WINDOWS

YOU'RE PAYING FOR NEW WINDOWS WHETHER YOU BUY THEM OR NOT.

According to the U.S.
Department of Energy
and H.U.D.

- 70% of your heating dollars
- 46% of your air conditioning dollars
are lost through windows and doors

According to National
Association of Realtors
and Remodeling Magazine

- 79% of cost is immediately returned

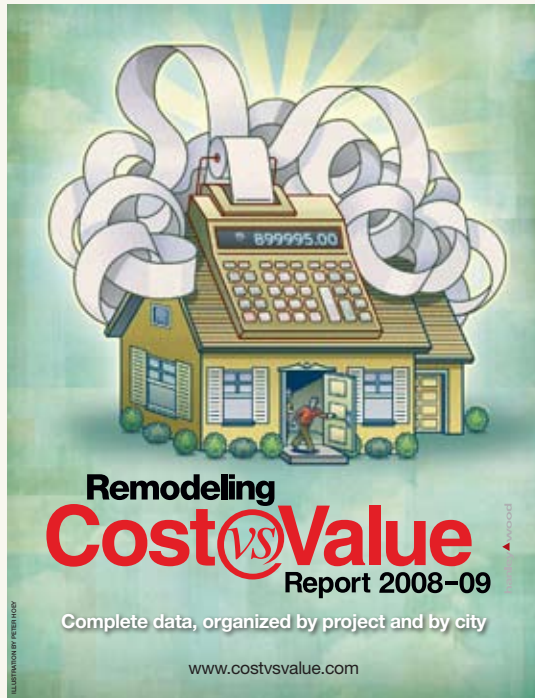
Up to 40% annual
energy savings



PREMIUM SERIES

REPLACEMENT WINDOWS

YOU'RE PAYING FOR NEW WINDOWS WHETHER YOU BUY THEM OR NOT.



2008

NATIONAL AVERAGES

PROJECT UPSCALE

Window Replacement – Vinyl

JOB
COST

\$13,608

RESALE
VALUE

\$10,781

COST
RECOUPED

79.2%

2008 UPSCALE REPLACEMENT WINDOW PROJECTS

Replace 10 existing 3-by-5-foot double-hung windows with insulated, low-E, simulated-divided-light vinyl windows. Simulated woodgrain interior finish; custom-color exterior finish. Trim exterior to match existing; do not disturb existing interior trim.

PREMIUM SERIES

REPLACEMENT WINDOWS

STUNNING STATEMENTS.
SMART SOLUTIONS.

THE FRAME AND SASH



LOW PRICE	MID PRICE	HIGH PRICE
<ul style="list-style-type: none"> • Regrind / scrap • Mechanically fastened • Thin walls • Open hollows • Not multi-chambered • Can warp or yellow • Old technology • Limited glass options 	<ul style="list-style-type: none"> • Uses PVC • Some are welded • Single point welding • Mechanical sash or mechanical frame • Improved wall thickness • Limited glass options • Can't carry weight of triple glazing 	<ul style="list-style-type: none"> • Uses PVC • All are typically welded • More vinyl • Thicker walls • Thicker frames • Multi-chambered design • Aluminum or steel reinforcement • Energy savings options





NEW GENERATION VINYL

Wood or metal windows can stick when they swell or deteriorate from corrosion. New Generation Vinyl withstands harsh weather and wear-and-tear better. Ply Gem Premium Series Replacement windows are constructed with rugged, maintenance-free New Generation uiPVC (unplasticized impact-modified polyvinyl chloride). Its low conductivity and high energy-efficiency properties are ideal for Ply Gem's advanced window construction. And because vinyl's base color is solid through-and-through, you'll never need to paint or stain these windows.



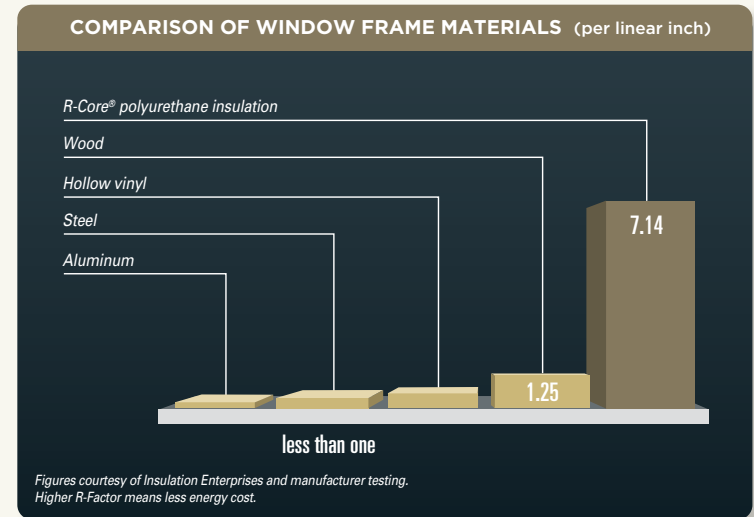
PINCH FUSION WELDING

Ply Gem Premium Series Replacement windows are entirely fusion welded – sashes and mainframes – to create a solid, one-piece unit that maintains its strength over the years. Our state-of-the-art fusion process ensures frame and sash corners won't have the excess variance found with other welding techniques.

R-CORE® INSULATION

The vinyl mainframes of Ply Gem Premium Series windows are filled with patented† R-Core® insulation (pre-expanded high-density solid-polyurethane), the same type used in many refrigerator/freezer doors. It prevents voids and settling and results in even distribution of the maximum insulating barrier.

Premium Series windows with the optional Energy Package upgrade feature additional R-Core in the sash for the ultimate in thermal performance and warmth.



SIL LOCK

Premium windows with SilLock are built with a sloped sill which forces water to drain to the exterior of the window, keeping your windows dry. This unique design also ensures a tight weatherstrip contact at the sill.

†U.S. Patent Number: 4,516,356

PREMIUM SERIES

REPLACEMENT WINDOWS



INTERFORCE II™

Our Premium windows with the Energy Package upgrade feature Interforce II™ internal fiberglass reinforced meeting rails for unsurpassed strength and durability.

PREMIUM SERIES

REPLACEMENT WINDOWS

THE GREAT DIFFERENTIATOR.

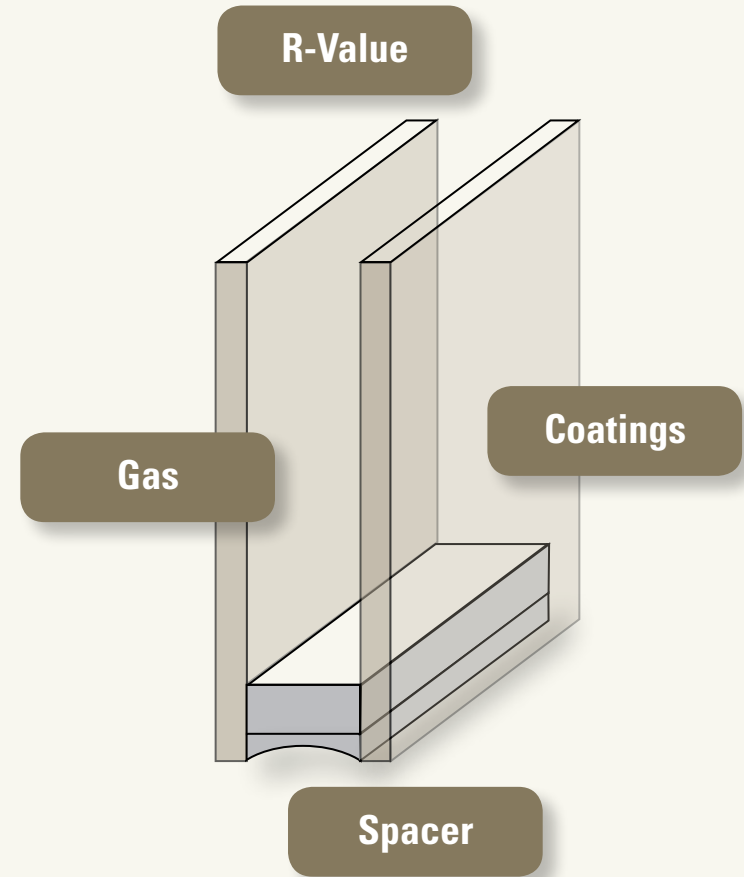
GLASS PACKAGES



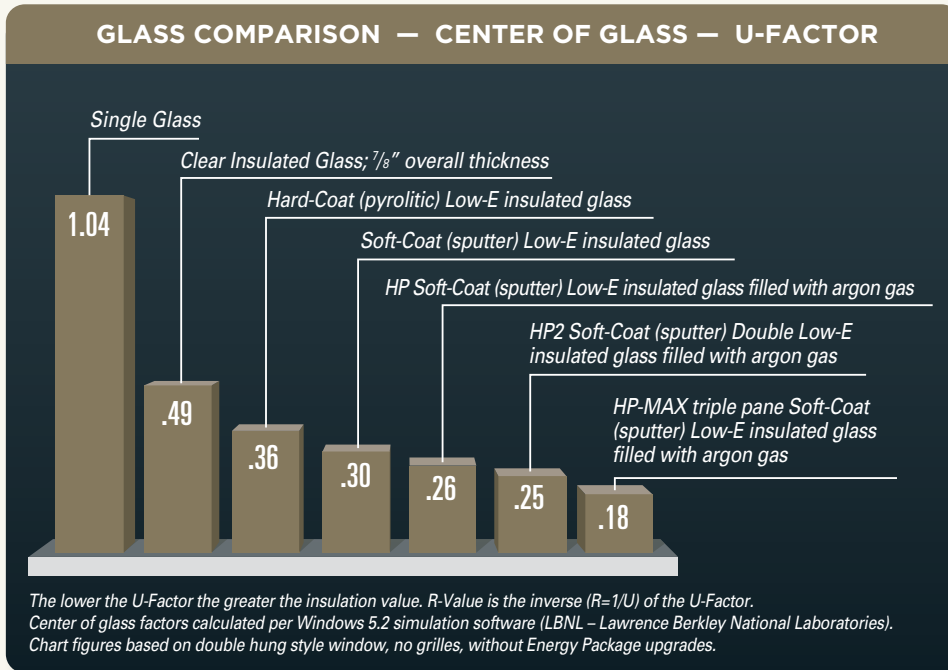
80%
of a window
is glass



80% of energy loss is through the glass.



The battle will be won or lost through the glass.



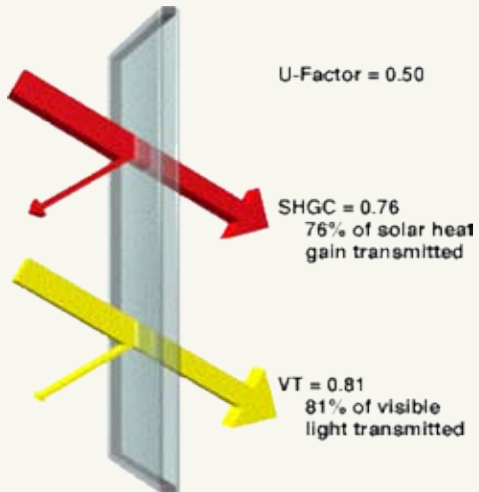
According to the U.S. Department of Energy and H.U.D.

- 70% of your heating dollars
- 46% of your air conditioning dollars are lost through windows and doors

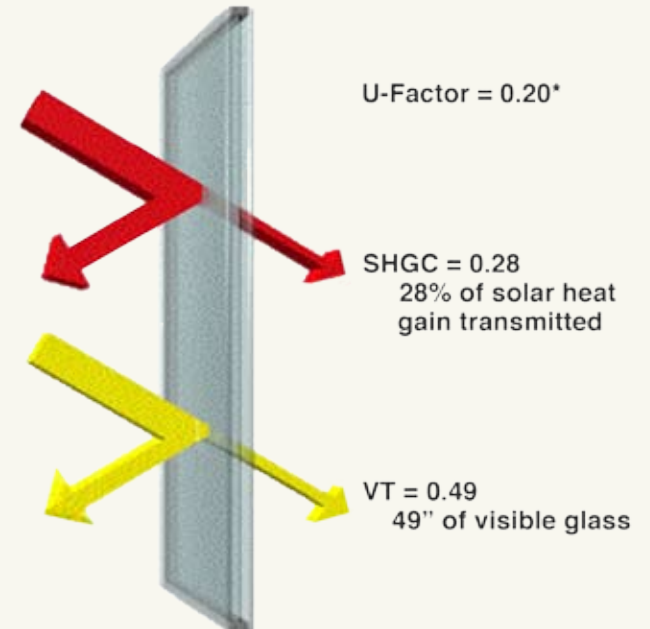
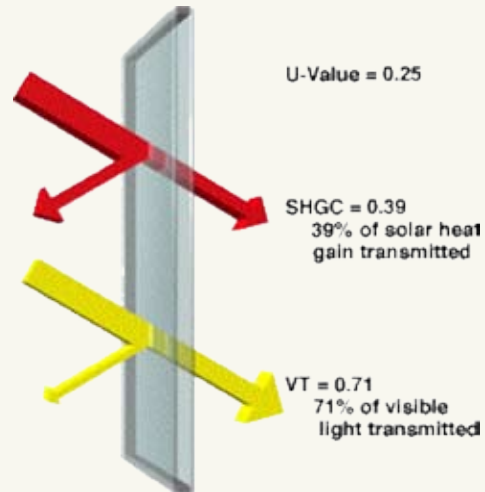
PREMIUM SERIES

REPLACEMENT WINDOWS

TRADITIONAL
DOUBLE GLAZED



DOUBLE GLAZED
WITH LOW-E

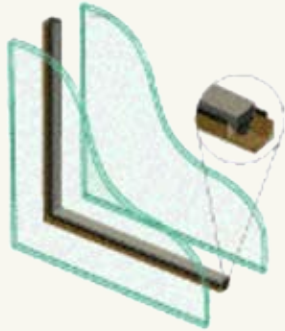


1865

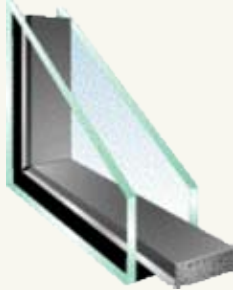
1970's

The Future

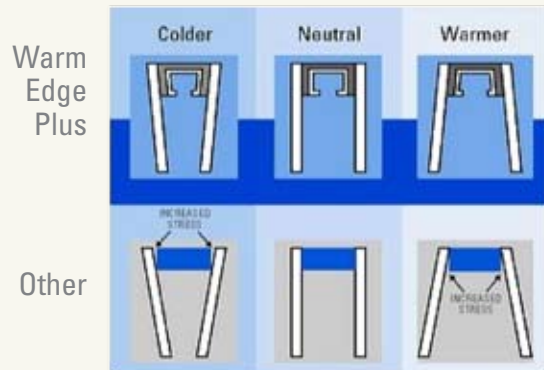
*Numbers based on picture windows.



Traditional aluminum spacer systems are not Warm Edge design, allowing conduction through the spacer that can lead to condensation.



New non-metallic spacers provide a Warm Edge design but offer little to no structural integrity that can lead to glass slippage and failure with heavier units.

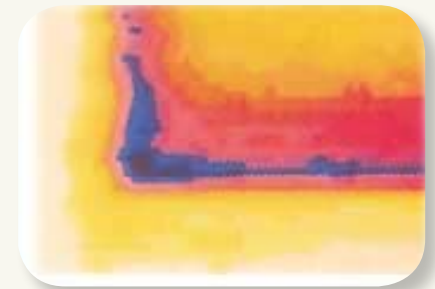
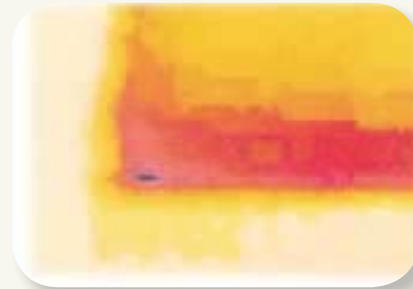


Only the **WARM EDGE SPACER SYSTEM** provides a design with a U-shaped spacer that allows the insulated glass unit to flex without adding pressure to the glass. This design promotes a long term solution against seal failure.



Warm Edge Spacer System

- 88% less conductive
- Warm Edge spacer reduces the chance for condensation
- Polyisobutalene sealant helps to isolate spacer from the glass to added warmth
- One-piece construction virtually eliminates failed corners while adding strength



**WARM
EDGE**

TRADITIONAL

Red is warm, blue is cold.

PREMIUM SERIES

REPLACEMENT WINDOWS



Traditional spacer — *a rapid and complete transfer of cold.*



Warm Edge spacer — *a minimal transfer of cold.*

See for yourself.



All Low-E glass is not created equal.



Hard (pyrolytic) Coat
Low-E



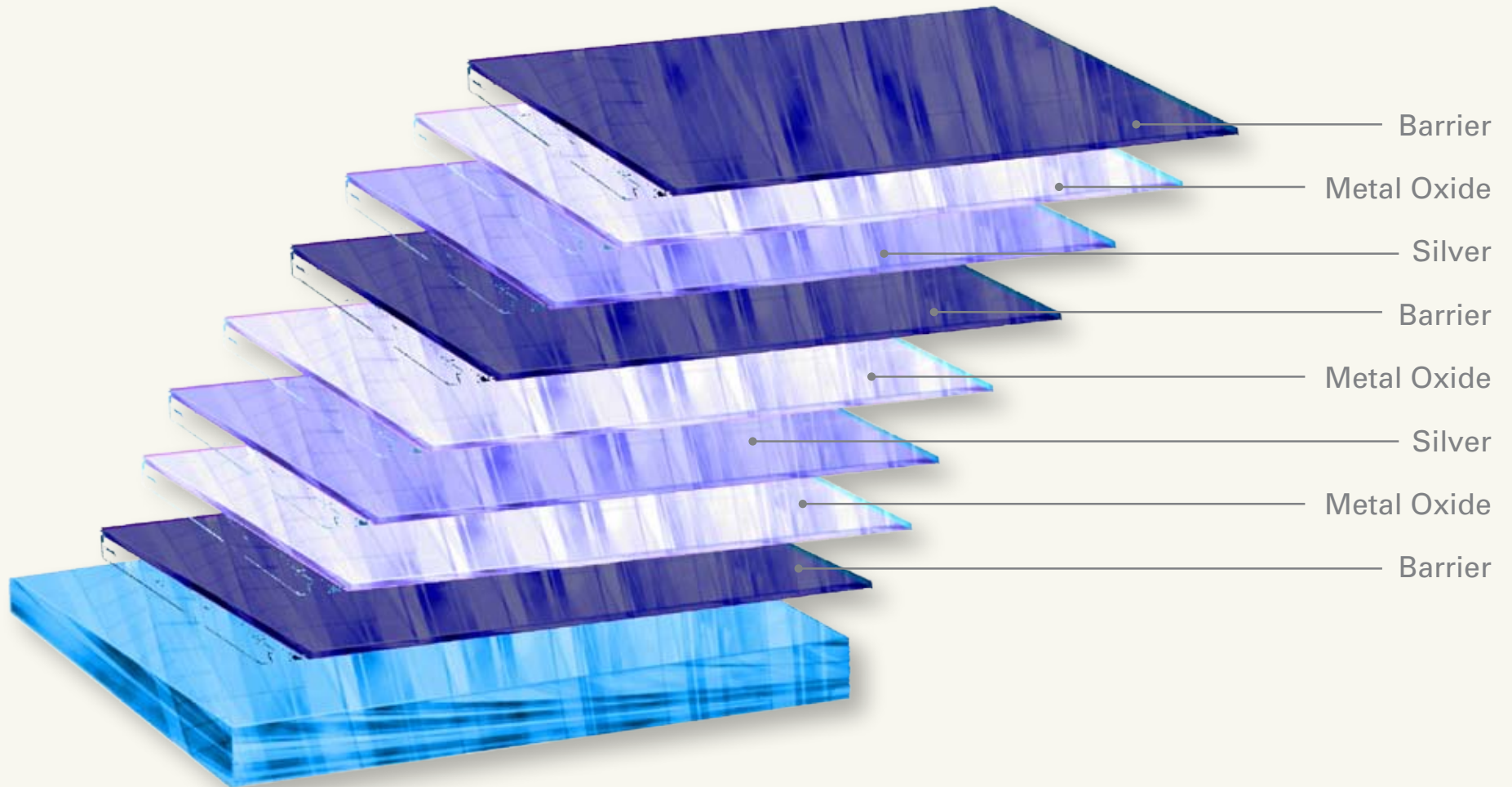
Soft (sputter) Coat
Low-E



Dual 9 Layer Soft Coat
HP Max (Low-E with argon)



HP MAX LOW-E LAYER SYSTEM



PREMIUM SERIES

REPLACEMENT WINDOWS

INCREASING COST



AIR	AIR Just everyday air, the most common of "gas" used in the production of insulated glass.
2 He	HELIUM Less dense than common air. Is not effective as an insulator.
10 Ne	NEON Less dense than common air. Is not effective as an insulator.
18 Ar	ARGON 48% denser than air. Helps to slow down the transfer of heat through the space between the glass layers. .9340% of our atmosphere.
36 Kr	KRYPTON 209% denser than air. Insulates better than argon. Is much rarer than argon with only 1.14ppmv
54 Xe	XENON 390% denser than air. Insulates better than argon or krypton but is very rare (and very expensive). With 0.09ppmy
86 Rn	RADON No let's not use this one. It's denser but radon has some other issues...

HP Max Glass System

- HP Max Warm Edge flexing
- HP Max thermal break polyisobutylene sealant
- HP Max soft coat 9-layer Low-E
- HP Max insulated glass system with the two panes of Low-E and two air spaces with argon fill



PREMIUM SERIES

REPLACEMENT WINDOWS



HP MAX GLASS SYSTEM

is triple pane, combining two panes of multilayered vacuum-deposition Low-E insulating glass with an interior glass substrate and two insulating chambers of argon gas. The result is a $\frac{7}{8}$ " insulated glass unit that is nearly four times more energy efficient than clear insulating glass. Premium Windows with the HP Max glass system are among the most thermally-efficient windows you can buy today.



HP2 GLASS SYSTEM

has two lites of Low-E glass and an insulation chamber of argon gas. The $\frac{7}{8}$ " dual-surface multilayer vacuum-deposition Low-E insulated glass units with argon gas makes these windows nearly two times more energy efficient than a clear insulated glass unit.



HP GLASS SYSTEM

has one lite of soft-coat, $\frac{7}{8}$ " single-surface multilayer vacuum-deposition Low-E insulated glass unit with argon gas. Argon gas is 40% denser than air.* Because glass makes up the majority of a window's surface, a better glass unit means better energy efficiency.

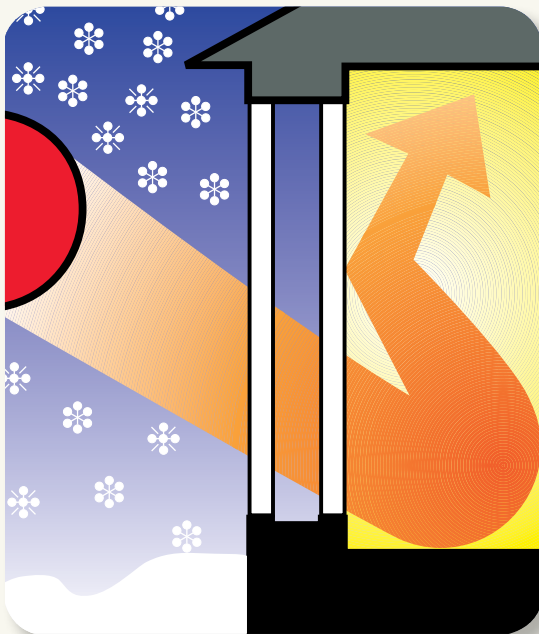
**Figure courtesy of Linde Gas, Inc.*

PREMIUM SERIES

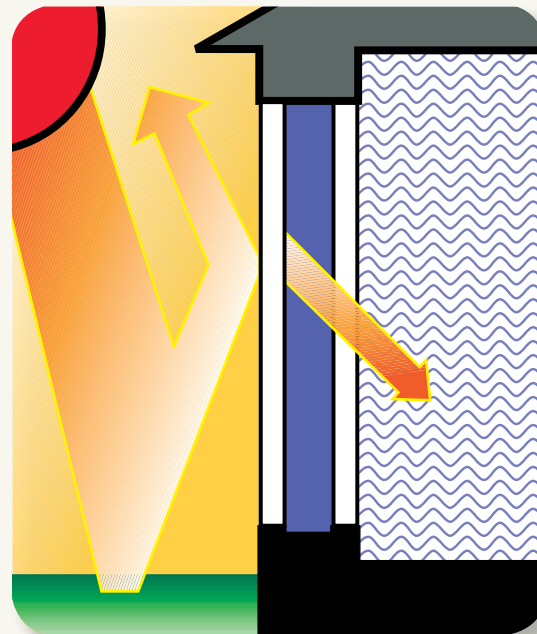
REPLACEMENT WINDOWS



Only the HP Glass System combines all the energy performance features to maximize your savings.



Keeps you warm in the winter.



Keeps you cool in the summer.



Protects furnishings, carpets and draperies.

PREMIUM SERIES

REPLACEMENT WINDOWS

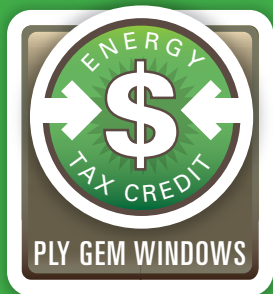


ENERGY PACKAGE UPGRADES

The Energy Package Upgrade options include the HP Glass Package of your choice with the addition of R-core to the sash and frame. R-Core® is a patented process utilizing pre-formed polyurethane insulation. In addition, Interforce II™ fiberglass reinforcement is placed in the meeting rails of double hung and slide windows providing DP50 and DP45 product ratings. The Energy Package options provide unsurpassed strength, durability and energy efficiency.

PREMIUM SERIES

REPLACEMENT WINDOWS



FEDERAL ENERGY TAX CREDIT

To qualify for the federal energy tax credit, replacement windows and/or patio doors must have both a U-Factor rating of .30 or lower and a Solar Heat Gain Coefficient (SHGC) rating of .30 or lower. This credit is valid on products purchased and installed between January 1, 2009 and December 31, 2010.



IMPORTANT INFORMATION FOR HOMEOWNERS

- Up to \$1,500 maximum credit for windows for all taxable years.
- Allowed only for amounts paid or incurred to purchase the window or door.
- Not allowed for amounts paid for onsite preparation, assembly, original installation labor, other components or sales tax.
- The purchase must be made during the taxable year for which the credit is claimed.

PREMIUM HP2

Double Low-E/argon meets or exceeds for the following products



	U Factor*	SHGC*
Double Hung	.30	.27
Slider	.30	.26
Picture	.27	.30
Operating Casement	.29	.25
Fixed Casement	.27	.29
Awning	.29	.25
Sliding Patio Door	.28	.25

PREMIUM HP MAX

Triple pane with 2 lites of Low-E/argon far exceeds for the following products



	U Factor*	SHGC*
Double Hung	.24	.24
Slider	.24	.24
Picture	.20	.28
Operating Casement	.23	.23
Fixed Casement	.21	.27
Awning	.23	.23
Sliding Patio Door	.22	.23

NOTE: Ply Gem Premium replacement double hung windows with upgrade to the Energy Package reinforced and insulated sash option combined with the HP glass option (single lite Low-E/argon) meets the energy tax credit requirements with a .30 U Factor/.29 SHGC. Please see the NFRC test data summaries for specific configurations. The addition of grilles can vary the numbers slightly, but all products shown above meet or exceed the energy tax credit requirements.

PREMIUM SERIES

REPLACEMENT WINDOWS

PREMIUM SERIES

REPLACEMENT WINDOWS

NOT ALL WARRANTIES
ARE CREATED EQUAL.





ONE OF LIFE'S FEW GUARANTEES.

Life comes with few guarantees. Fortunately, Premium Windows offer you a permanent solution. Our custom vinyl windows offer more than construction quality, unmatched energy efficiency and low maintenance. They also offer a Lifetime Limited Warranty.

We believe so strongly in the durability of our windows that we back each window unit with our hassle-free Limited Lifetime Warranty. Lifetime means your windows are protected under the warranty for as long as you live in your home. And your warranty is transferable to the next homeowner helping you protect your investment by increasing your home's resale value.

Wouldn't it be nice if you could feel so confident about everything you bought?

PREMIUM SERIES

REPLACEMENT WINDOWS

PREMIUM SERIES

REPLACEMENT WINDOWS



THE BEAUTY IS IN
THE DETAILS.



DOUBLE HUNG WINDOWS remain a favorite for their combination of classic looks and convenient operation. And though these may look like traditional windows, they're the picture of modern window innovation. Available double hung configurations include operating, fixed and factory mullied units.



1. Most double hung windows meet a Design Pressure (DP) rating of 50 (with Energy Package Upgrade).



CASEMENT & AWNING

WINDOWS. Dressing up your home with European flair has never been so rewarding. With a full 90° sweep, these windows give nature a warm welcome in nice weather. But they work even better at giving bad weather the cold shoulder. Configurations include single, triple and quad integral mulled or factory mulled units.



1. Most awning and operating casement windows meet a Design Pressure (DP) rating of 70 (gateway size of 24" by 60") and most fixed casement windows meet a Design Pressure (DP) rating of 45. 2. Optional.

SLIDING PATIO DOORS are your home's way of welcoming guests with arms wide open. But when heat, cold, rain, wind or intruders come knocking, this beauty is as tough as nails. Configurations include two and three panel operating units as well as complementary side lites and transoms.



1. Most 6' sliding doors meet a Design Pressure (DP) rating of 30 and most 8' sliding doors meet a Design Press (DP) rating of 25 (with Energy Package Upgrade).

- Architectural styling
- Extruded screen with integral lift and fiberglass mesh
- Dedicated sill extrusion for a traditional look
 - Sloped sill design for water run-off
 - Weep-less design for long-term performance
 - SilLock for added durability
- Silicone glazing for a permanent seal
- Dual durometer trim for clean aesthetics
- Compression bulb seal at the sill for a weather-tight fit

*Information based on double hung window.

- Woodgrain options for the warmth and beauty of wood without the maintenance
- Multiple grille options, designer glass or regal v-groove pattern options
- Coordinated hardware for premium styling
 - Die cast low profile tilt latches
 - Heavy-duty cam-action lock
- Designer architectural inspired glazing beads
- Mitered corners for a finished look
- Top sash pull for ease of top sash operation

- Locking pivot bars
- Double hung / double tilt
- Check rail interlock for consistent weatherstrip contact
- Fin and pile weatherstrip throughout key areas
- Constant force balance system
- Optional Energy Package upgrade includes:
 - Interforce II™ reinforced meeting rails
 - Patented R-Core® insulation in both the frame and sash
- Registered serial number for warranty reference

**GOLDEN OAK
WOODGRAIN**



EXTERIOR



**COLONIAL CHERRY
WOODGRAIN**



EXTERIOR



**NATURAL OAK
WOODGRAIN**

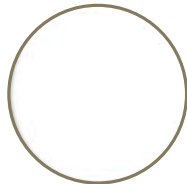


EXTERIOR



WHITE

INTERIOR



EXTERIOR



BEIGE

INTERIOR



EXTERIOR



- Stepped contour exterior profile
- Detailed interior glazing beads
- Coordinated hardware

Colors are reproduced as accurately as printer technology allows.
Please see your authorized Ply Gem Windows representative for actual samples.

REGAL
V-GROOVE



Regal Colonial



Regal Perimeter



Regal Florentine

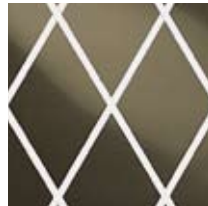


Regal Florentine
Elongated

GRILLES-BETWEEN-
THE-GLASS



Classic Colonial



Classic Diamond



Classic Perimeter



Williamsburg
Colonial



Narrow Brass

CUSTOM
GRILLES

DESIGNER
GLASS



Star-beveled



Ceylon



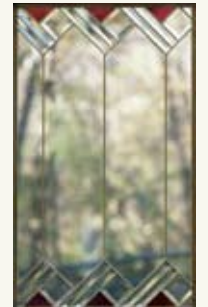
La Parisienne



Charlevoix



Bratenahl



Sheffield

PREMIUM SERIES

REPLACEMENT WINDOWS

Fiberglass mesh is the standard insect screening material used on all Ply Gem Windows replacement products with available half or full screens. This product provides good outward visibility and ventilation and will not rust, corrode or stain. Additional options available include:

ALUMINUM MESH

Provides added protection against aggressive regional insects that eat through normal fiberglass mesh. Charcoal finish reduces glare.

SOLAR BLOCK SCREEN

Blocks 70% of the sun's heat and glare. Keeps living spaces cooler, reduces energy costs and protects furnishings against fading.

OPTIMAL VIEWING SCREEN

Thinner fiberglass material allows maximum viewing while tighter mesh pattern keeps out tiny insects.

PET RESISTANT SCREEN¹

Strong vinyl-coated polyester and provides a screen seven times stronger than traditional insect screening with excellent outward visibility.

1. Doors only.



LET'S RENEW YOUR VIEW.